

POWR-LIFT 1600

VACUUM TELEHANDLER

PL1600-416L

A battery-powered, self-propelled lifter that uses vacuum technology to securely handle loads, with powered boom and tilt plus manual rotation and side-to-side yaw movement for precise positioning in glazing and material handling.



SHOWN WITH OPTIONAL FORKLIFT POCKETS



SHOWING YAW MOVEMENT



SHOWING MANUAL ROTATION

Precision Load Control

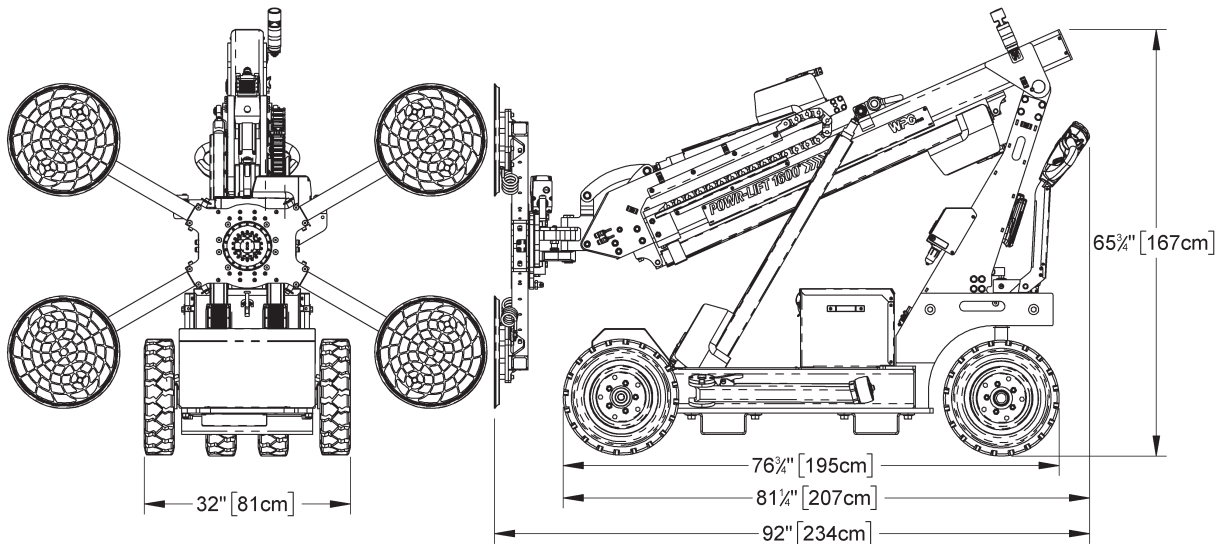
Experience unmatched accuracy with 8" (20 cm) side-shift, two-speed motion controls, and an impressive lifting height of 13 ft (4 m) with vertical loads or 14 ft (4.3 m) with horizontal loads—giving you complete command of every placement.

Best-in-Class Performance

Lift with confidence. A robust 1,600 lb (725 kg) capacity delivers the most lifting power among comparable industry products.

Radio Remote Control

Take control from anywhere on the jobsite. Standard radio remote operation provides greater flexibility, visibility, and ease of use.



Model Number	PL1600-416L
Maximum Load Capacity	1600 lbs (725 kg) <i>Caution: Lifting capacity of the machine is reduced by various factors, especially boom position—see load chart page 4.</i>
Standard Pad Spread (see next page)	Large Rectangular: 50" x 74" (127 cm x 188 cm) Small Rectangular: 36" x 49-1/2" (91 cm x 126 cm) Linear: 17-1/4" x 83" (44 cm x 211 cm)
Number/Size of Pads	4 / 16" (41 cm) diameter, lipped pads
Load Movement	Manual rotation, 360° with 12 rotation stops (every 30°) Powered tilt, 180° Powered side-shift, 8" (20 cm) (4" [10 cm] to right or left of center) Manual yaw, 90° to the right side and 40° to the left side
Maximum Lifting Height	159" (404 cm) with vertical loads (fig. 1) 173-1/2" (441 cm) with horizontal loads (fig. 2)
Standard Operating Power	24 volts DC
Lifter Weight	2520 lbs (1143 kg)

STANDARD FEATURES

Remote Control System

Controls all powered functions—including attach, release, load tilt, load side-shift, boom extension/retraction and more—up to 250' (76 m) away from operator location. Radio receiver comes standard with automated charging dock.

Self-Propelled Drive System

Provides effortless machine movement with variable speed control, along with a separate power switch to prevent drive functions as desired for safety. Ergonomic handle controls speed and maneuvering of machine or folds out of the way when not in use.

Dual Vacuum System

Features two independent air-line circuits to reduce risk of workplace accidents.

24V Batteries and Chargers

Provide independent, rechargeable power source for cord-free machine operation in any location. On-board chargers feature status indicator and automatic shut-off.

Battery Gauge

Shows energy level in real time, to help determine when charging is needed, with a choice of two views: percentage of charge or present voltage.

Green Lift Light

Provides visual assurance to know when vacuum is sufficient for lifting.

Red Warning Light

Alerts operator of machine/load instability (continuous) or insufficient battery energy to handle loads (flashing).

Warning Buzzer

Alerts operator of machine/load instability (continuous) or need to replace buzzer battery (intermittent).

Vacuum Gauges

Feature green and red zones to clearly indicate whether vacuum levels are sufficient for lifting.

Vacuum Line Filters

Protect the vacuum generating system from contaminants.

Spring-Mounted Vacuum Pads

Automatically adjust to match the angle of load surfaces, easing attachment.

Movable Pad Mounts

Allow vacuum pads to be moved without tools, adapting the machine to various load sizes.

Extension Arms

Permit multiple machine configurations for tool-free adaptation to many different load sizes.

Two-Action, Blow-Off Release

Uses two separate buttons to avoid accidental release, and reverses airflow to quickly release loads without after-stick.

AVAILABLE OPTION

Forklift Pockets

Enable use of a suitable forklift or telehandler to unload the machine from a delivery truck or transport it across rough terrain.

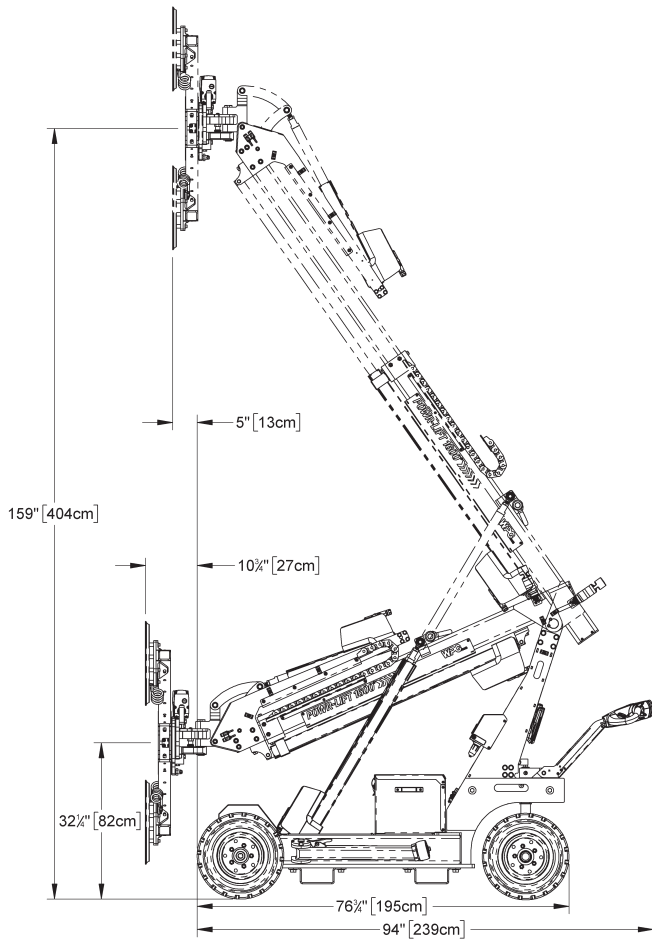


Figure 1

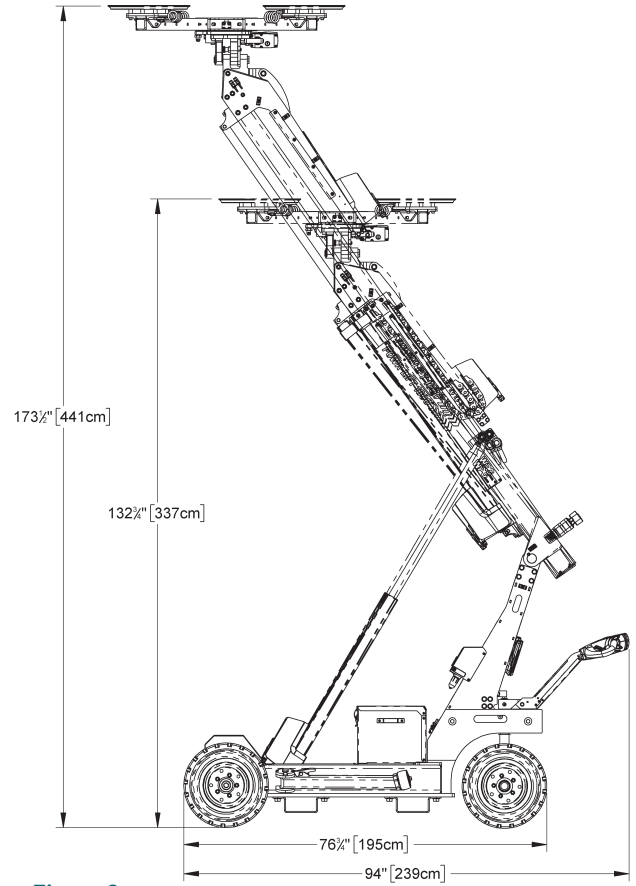


Figure 2

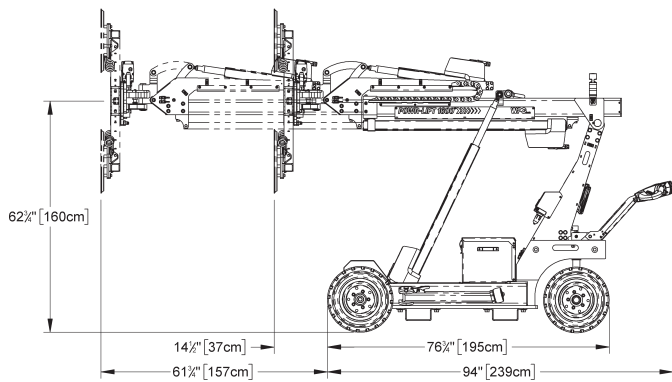


Figure 3

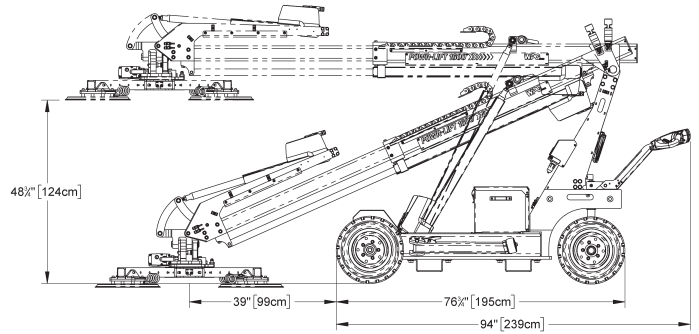
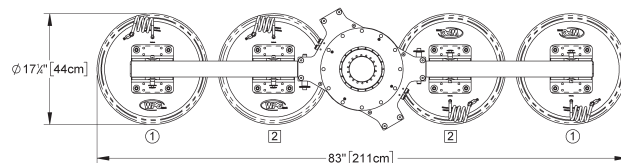
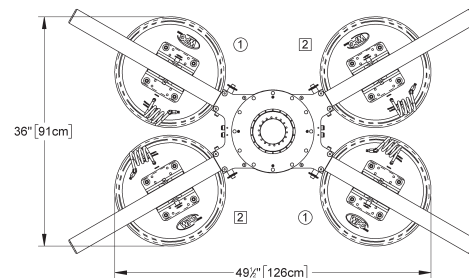
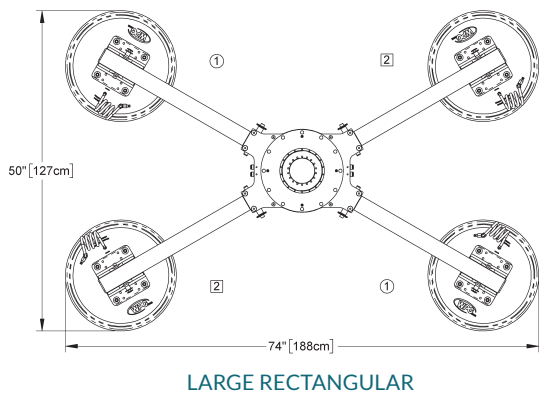
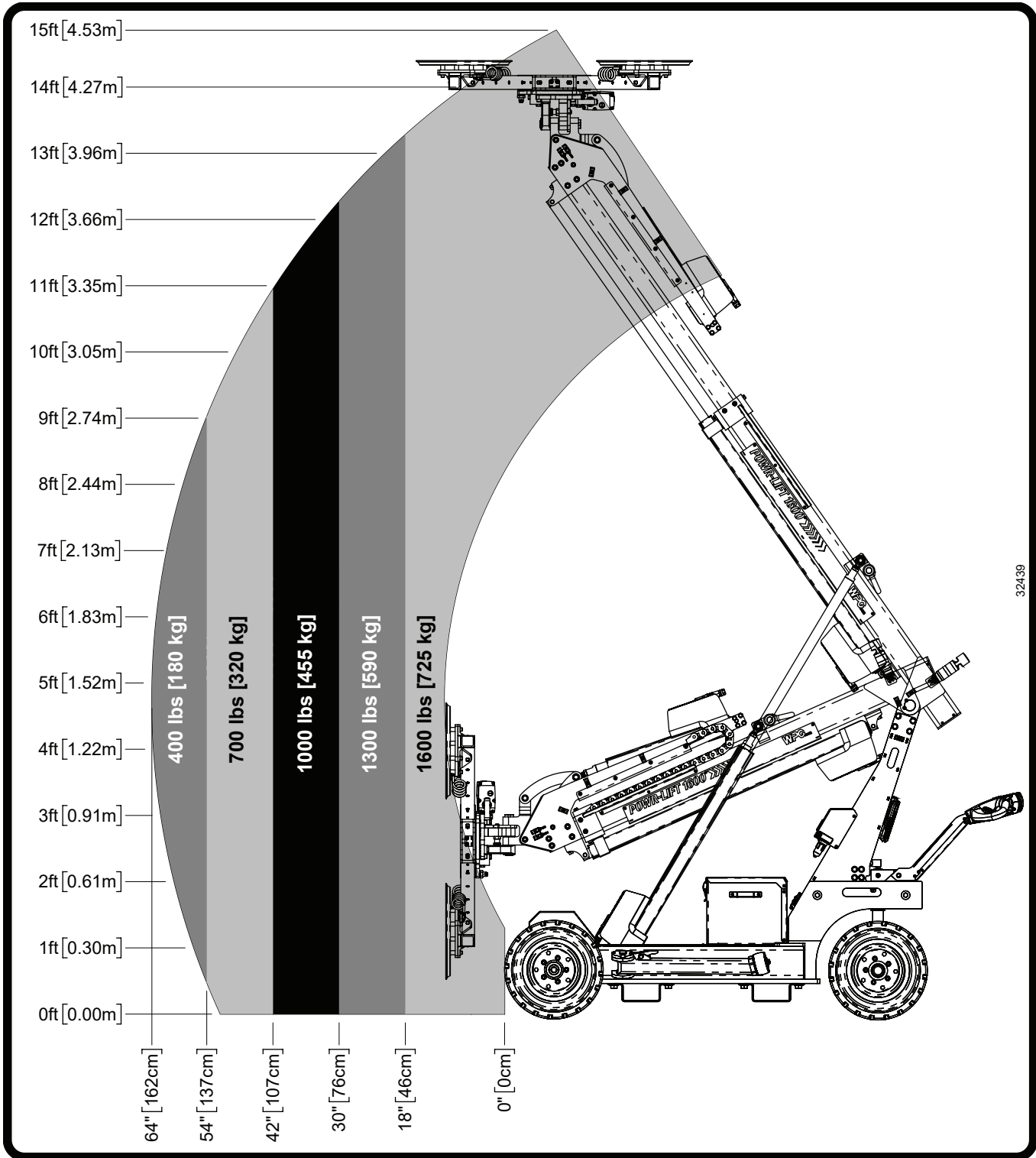


Figure 4

STANDARD PAD SPREADS





32439



Based on product information at time of publication. Environmental conditions can affect product performance and longevity; consult the product instructions on WPG.com or contact a Technical Sales Representative for more information.